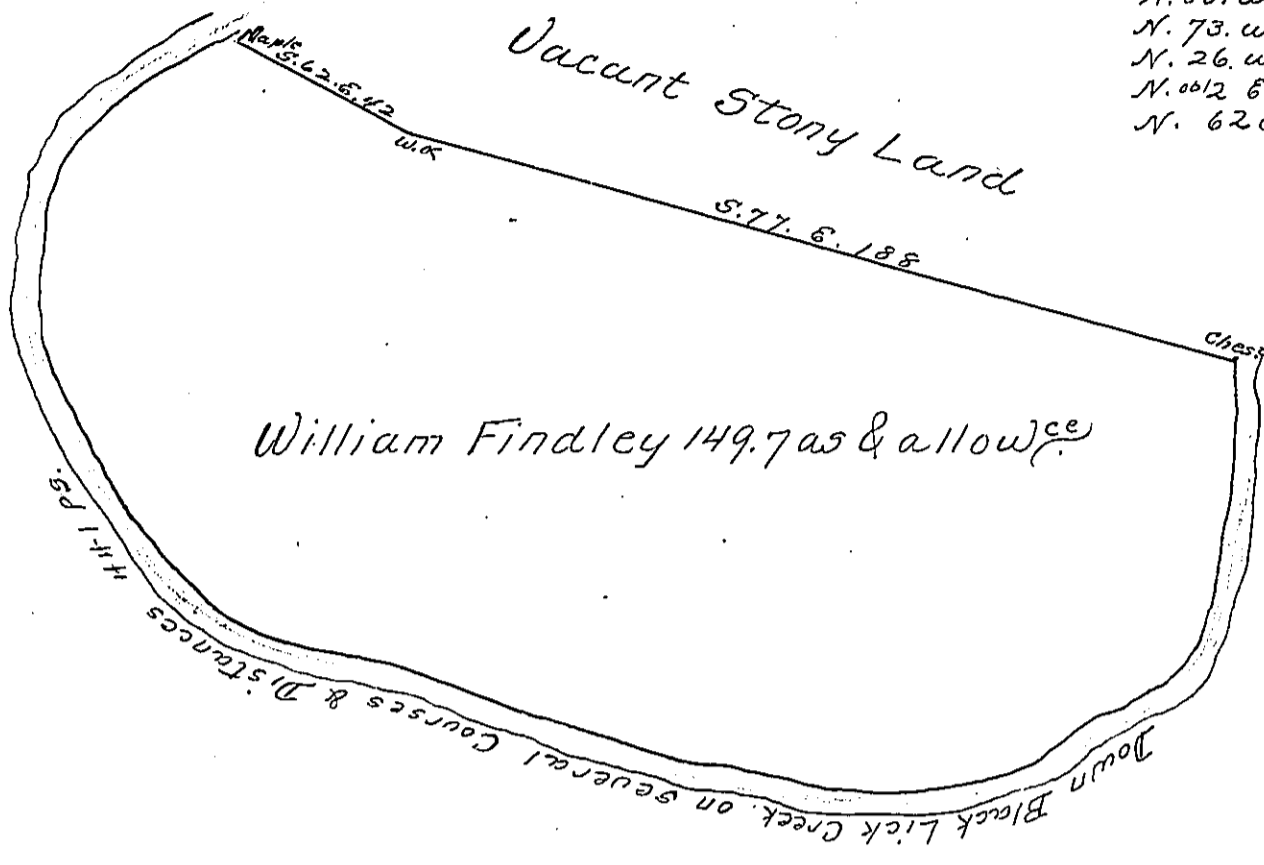


The Courses & Distances
on the Creek

- S. 3. W. 62 ps
- S. 59. W. 54
- N. 88. W. 56
- N. 73. W. 130
- N. 26. W. 72
- N. 00 1/2 E. 35
- N. 62 E. 32.



Findley's Tract Survey'd on the 4th Day of Novr.
1769 to William Findley Containing one hundred
forty nine Acres & an half of an acre & the usual all-
owance of Six p^{ts}. Situate on the North Side of
Black Lick Creek including the claim of
Shadrach Mushmore in Bedford County By order
of the 3d Day of Apl. 1769 No. 2567

p.
Joshua Elder L.S.

To John Lukens Esqr. S. Genl.

IN TESTIMONY that the above is a copy of the original remaining on file in
the Department of Internal Affairs of Pennsylvania, made
conformably to an Act of Assembly approved the 16th day of
February, 1833, I have hereunto set my Hand and caused
the Seal of said Department to be affixed at Harrisburg,
this seventh day of October 1902

James W. Fatta
Secretary of Internal Affairs.